



TIIG

INJURY SURVEILLANCE IN THE NORTH WEST OF ENGLAND

Ormskirk Paediatric Emergency Department Monthly Bulletin: April 2012 to March 2013

This bulletin provides a breakdown of all injury attendances at Ormskirk Paediatric Emergency Department (ED) between April 2012 and March 2013.¹

Between April 2012 and March 2013 there were 5,150 attendances at Ormskirk Paediatric ED. Injury attendances peaked in May (n=623) with December having the least number of attendances (n=256) (**Figure 1**).

Figure 2 illustrates injury attendances by gender. Across the whole year there were more male than female presentations at Ormskirk Paediatric ED (males=3,051; 59%).

The age group of injury attendances are presented in **Figure 3**. Almost two-fifths (38%) of injury attendances were aged between 10 and 14 years (n=1,932). Just over a quarter (26%) of attendees were aged under five years (n=1,331) with the same proportion aged 5-9 years (n=1,316).

Table 1 details the injury group of Ormskirk Paediatric ED attendances. Just under three-quarters (74%) of presentations were classified as other injury (n=3,820). One-fifth (20%) were recorded as sports injury (n=1,022) and 4% road traffic collisions (n=196).

The source of referral for patients presenting with injuries are illustrated in **Table 2**. The majority (90%) of injury attendees were recorded as other (n=4,650).

Table 3 presents injury attendances by location of incident. Over a third (36%) of incidents occurred in a public place (n=1,873) or in the home (n=1,735; 34%). Just over a fifth (21%) took place in an educational establishment (n=1,097).

The disposal method of injury attendances are displayed in **Table 4**. Seven in ten (70%) of attendees were discharged requiring no follow-up (n=3,591). Thirteen per cent were referred to the fracture clinic (n=654) and 5% discharged with a follow-up required with other health care provider.

Just under three-quarters (74%) of assault attendees presenting at the Ormskirk Paediatric ED between April 2012 and March 2013 were male (n=51). Over half (52%) were 5-14 years (n=36) with the remaining 48% aged between 15 and 29 years (n=33).

The primary assault location was in a public place (n=38; 55%) with over a quarter (26%) occurring in an educational establishment (n=18).

¹ Previous reports include data from the Minor Injury Unit. These data are no longer housed by Ormskirk Paediatric ED's information team but by the PCT and therefore cannot be included in this report.

Figure 1: Total number of injury attendances by month, April 2012 to March 2013

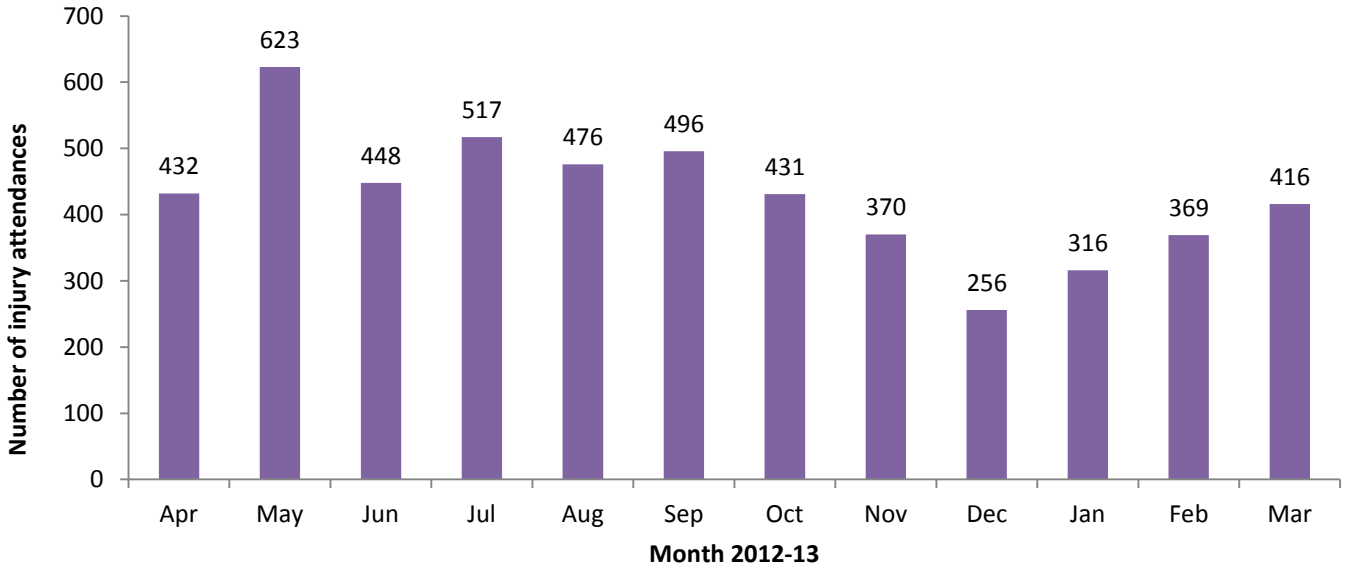


Figure 2: Gender of injury attendances by month, April 2012 to March 2013

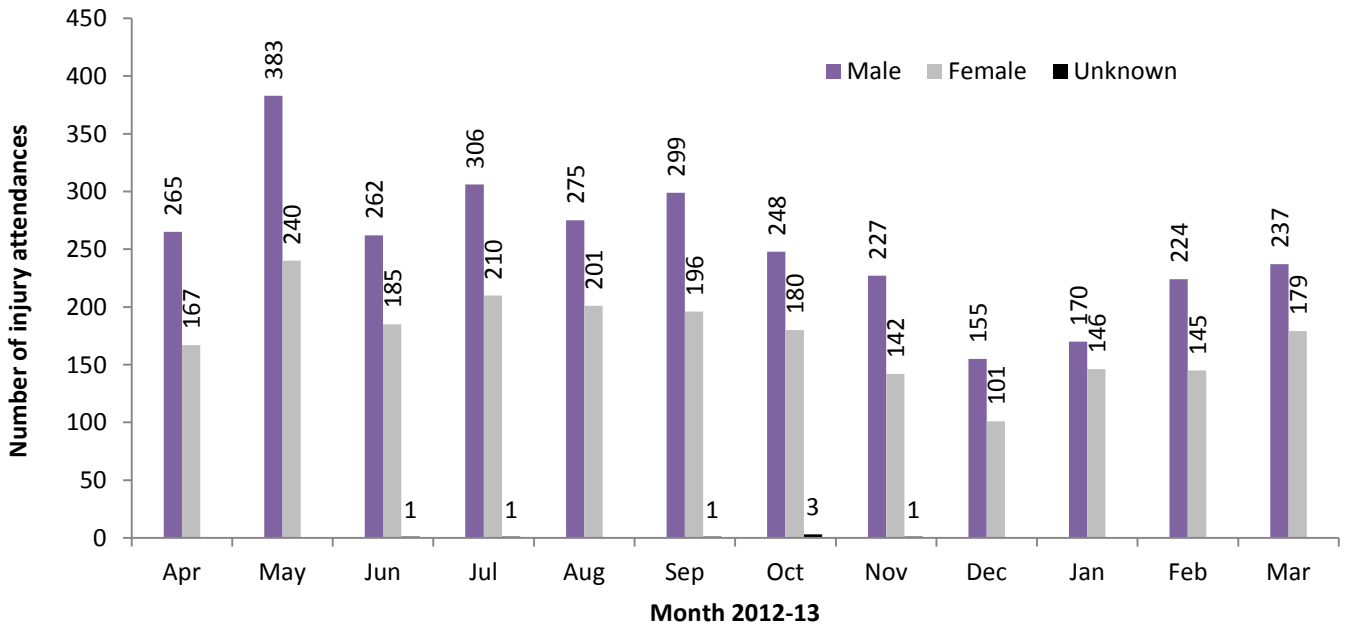


Figure 3: Age group of injury attendances by month, April 2012 to March 2013

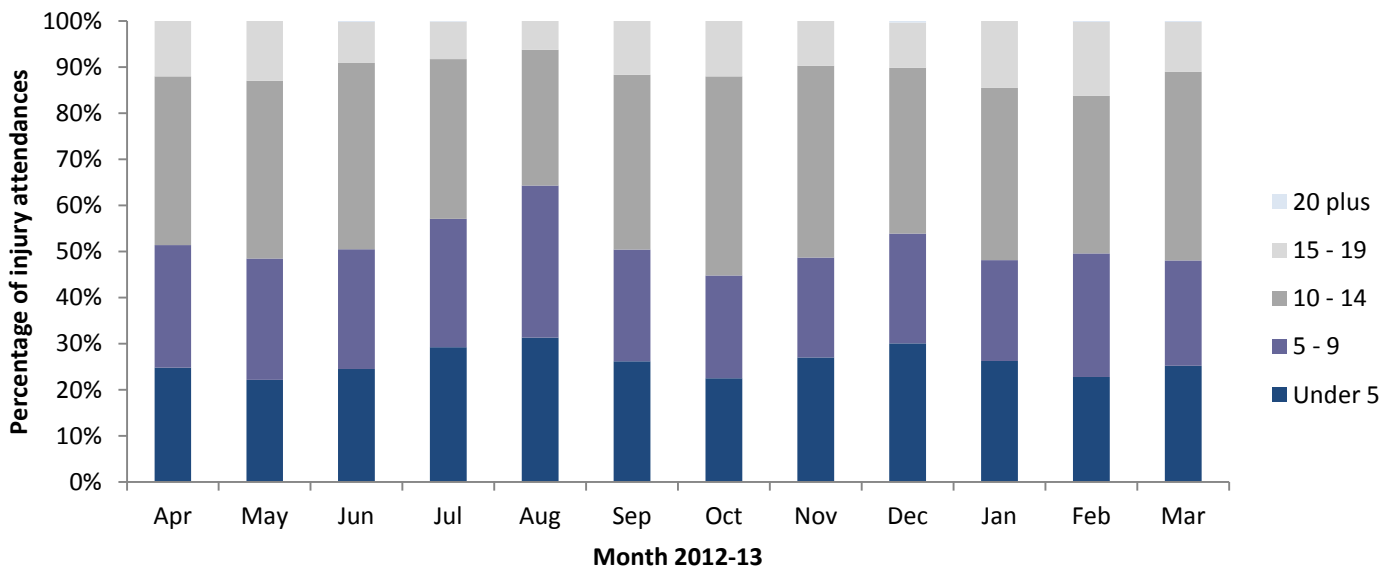


Table 1: Injury attendances by injury group and month, April 2012 to March 2013²

Injury group	Apr	May	Jun	Jul	Aug	Sep	Oct	Nov	Dec	Jan	Feb	Mar	Total	%
Other injury	321	450	334	414	415	356	285	256	187	250	250	302	3820	74
Sports injury	78	143	87	83	36	112	114	88	41	49	96	95	1022	20
Road traffic collision	19	21	16	14	14	21	18	18	20	11	13	11	196	4
Assault	8	7	7	5	7	6	7	***	***	5	5	5	69	1
Deliberate self-harm	<7	***	***	***	***	***	<8	***	***	***	<6	***	<43	1
Firework injury	***	***	***	***	***	***	***	***	***	***	***	***	***	0
Total	432	623	448	517	476	496	431	370	256	316	369	416	5150	100

Table 2: Injury attendances by source of referral and month, April 2012 to March 2013³

Source of referral	Apr	May	Jun	Jul	Aug	Sep	Oct	Nov	Dec	Jan	Feb	Mar	Total	%
Other	402	579	427	486	441	461	406	334	235	288	269	322	4650	90
Health care provider: same or other	19	25	8	12	23	18	9	12	5	9	15	13	168	3
Self-referral	***	***	6	***	5	***	***	***	5	12	61	49	151	3
Emergency services	***	5	***	8	***	8	6	15	6	***	9	9	76	1
Educational establishment	***	6	***	5	***	***	***	6	***	5	10	18	62	1
GP	***	5	***	***	***	***	***	***	***	***	***	***	27	1
Unknown	***	***	***	***	***	***	***	***	***	***	***	***	8	0
Police	***	***	***	***	***	***	***	***	***	***	***	***	<7	0
Local Authority social services	***	***	***	***	***	***	***	***	***	***	***	***	***	0
Total	432	623	448	517	476	496	431	370	256	316	369	416	5150	100

Table 3: Injury attendances by location of incident and month, April 2012 to March 2013⁴

Location	Apr	May	Jun	Jul	Aug	Sep	Oct	Nov	Dec	Jan	Feb	Mar	Total	%
Public place	199	231	166	204	218	201	134	99	87	84	131	119	1873	36
Home	156	202	159	192	193	147	121	123	90	114	115	123	1735	34
Educational establishment	50	138	88	63	10	99	133	125	56	97	96	142	1097	21
Other	27	52	35	58	55	49	43	23	23	21	27	32	444	9
Total	432	623	448	517	476	496	431	370	256	316	369	416	5150	100

Table 4: Disposal method of all injury attendances by month, April 2012 to March 2013

Disposal method	Jan	Feb	Mar	Apr	May	Jun	Jul	Aug	Sep	Oct	Nov	Dec	Total	%
Discharged - no follow-up	297	443	345	392	320	343	272	242	150	192	273	322	3591	70
Referred to fracture clinic	69	89	53	54	67	76	64	43	27	31	38	43	654	13
Discharged – follow-up by other health care provider	13	10	<8	9	26	26	48	34	39	51	8	***	275	5
Referred to other health care professional	13	33	17	17	18	12	10	6	9	8	13	11	167	3
Transferred to other health care provider	13	33	17	17	18	12	10	6	9	8	13	11	167	3
Admitted to hospital bed	15	20	11	17	11	10	12	10	9	8	10	8	141	3
Referred to ED clinic	***	***	7	9	14	17	13	21	13	17	10	13	139	3
Referred to other out-patient clinic	8	***	***	5	7	7	***	***	***	***	***	***	51	1
Left ED before being treated	6	8	***	***	***	***	***	10	***	***	5	5	45	1
Left ED - refused treatment	***	***	***	***	***	***	***	***	***	***	***	***	<6	0
Other	***	***	***	***	***	***	***	***	***	***	***	***	***	0
Total	432	623	448	517	476	496	431	370	256	316	369	416	5150	100

Published April 2013

Karen Swarbrick (TIIG Researcher/Analyst)

Centre for Public Health, Liverpool John Moores University, 2nd Floor, Henry Cotton Building, Liverpool, L3 2ET

Tel: 0151 231 4498 Email: K.A.Swarbrick@ljmu.ac.uk

Website: www.tiig.info (please note data requests should be made through the website)

² Please note that all numbers less than five have been suppressed (with ***) in line with patient confidentiality and if there is only one number in a category then two numbers will be suppressed to prevent back calculations from totals.

³ GP=General Practitioner.

⁴ Due to low numbers, injuries sustained at work have been included under 'Other' location.